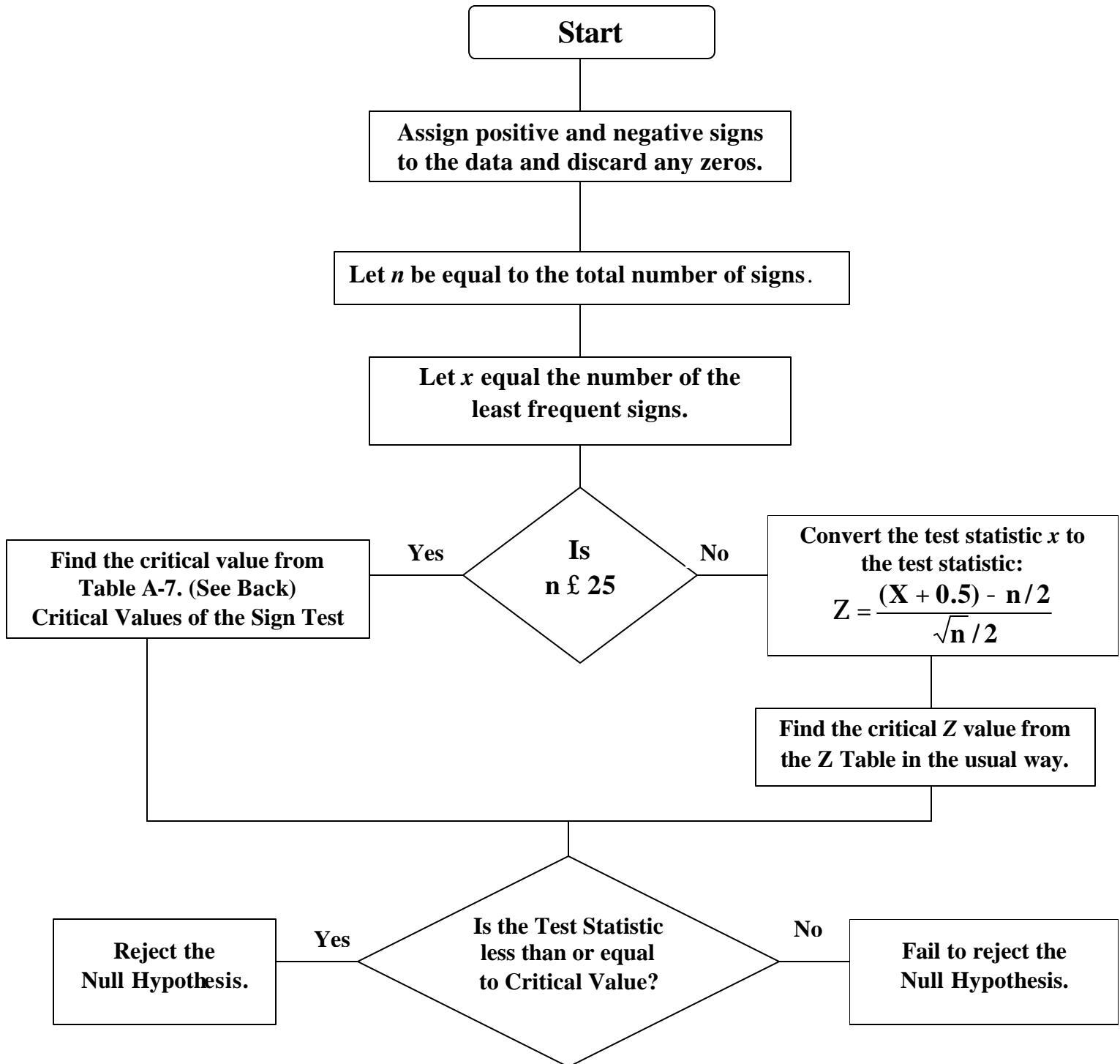


SIGN TEST



SIGN TEST

TABLE A-7 Critical Values for the Sign Test				
<i>n</i>	<i>a</i>			
	.005 (one tail)	.01 (one tail)	.025 (one tail)	.05 (one tail)
	.01 (two tails)	.02 (two tails)	.05 (two tails)	.10 (two tails)
1	*	*	*	*
2	*	*	*	*
3	*	*	*	*
4	*	*	*	*
5	*	*	*	0
6	*	*	0	0
7	*	0	0	0
8	0	0	0	1
9	0	0	1	1
10	0	0	1	1
11	0	1	1	2
12	1	1	2	2
13	1	1	2	3
14	1	2	2	3
15	2	2	3	3
16	2	2	3	4
17	2	3	4	4
18	3	3	4	5
19	3	4	4	5
20	3	4	5	5
21	4	4	5	6
22	4	5	5	6
23	4	5	6	7
24	5	5	6	7
25	5	6	7	7

Note: 1. * indicates that it is not possible to get a value in the critical region.

2. Reject the null hypothesis if the number of the less frequent sign (*x*) is less than or equal to the value in the table.

3. For values of *n* greater than 25, a normal approximation is used with

$$Z = \frac{(x + 0.5) - n/2}{\sqrt{n}/2}$$